



**Symbol MOTOROLA and OpenPro Warehouse Management Software.(WMS)**

[MC3090 Wireless Mobile Computer \(WLAN, Gun, Laser, Color, 5.0 PRO, 48-Key Keypad, High Capacity Battery and E\)](#)



Item Cost per unit is about \$2250.00 that includes gun, battery, charging unit, carrier. MC3090 Wireless Mobile Computer MC3090G-LC48 With battery, case and charger station There are about 40 different options on the product.

Based upon the size of the warehouse, will need wireless network and maybe some repeaters.

If your warehouse is already setup for wireless, nothing extra is required.

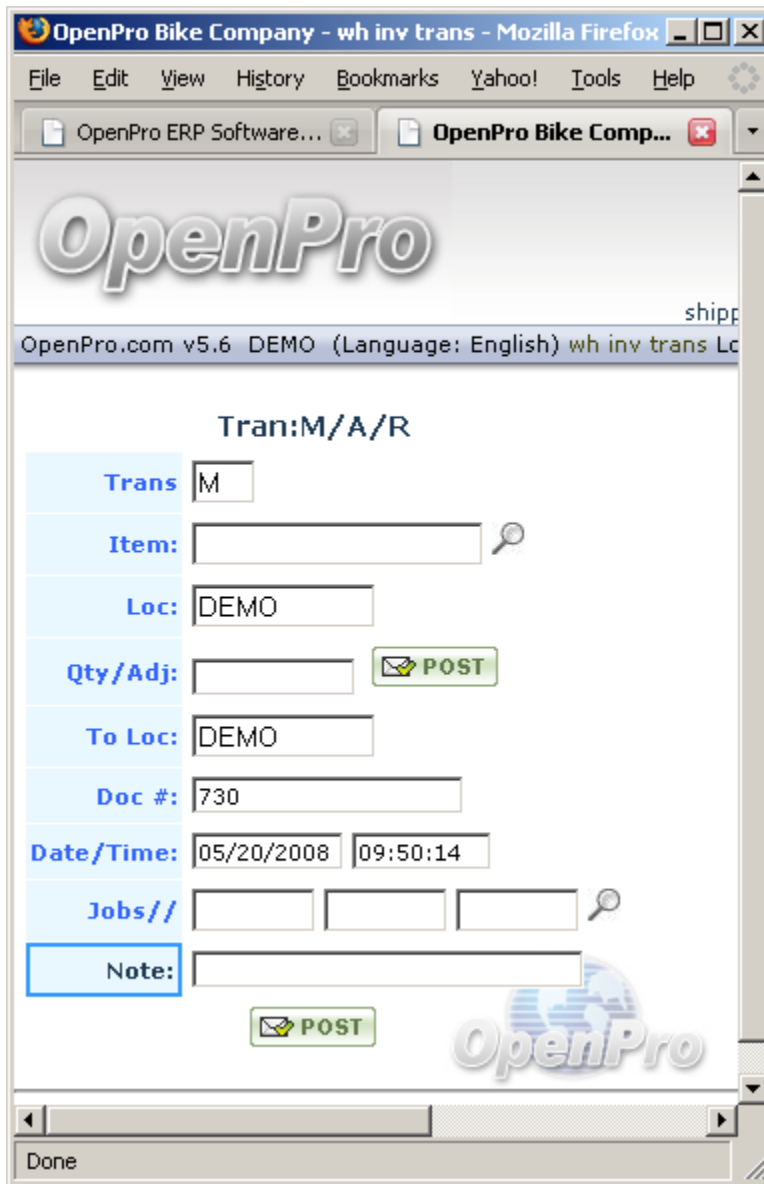


OpenPro's menu is designed to see the browser is coming from a portable terminal, so the menu automatically opens up all menu selections.



Basic Features include: RF (WiFi) , Batch portable data collection terminal Application, Cycle Counting, Physical Inventory, Inventory Moves & Transfers, Paperless Picking & Receiving, Multiple Units of Measure, SQL Server Capable, Serial Numbers and Lot Controlled, Bar Code Printing, Directed Pick & Put away, Cross Docking , Cubing (Space Management), Kitting, Replenishment, Wave Picking (Batched Orders)

OpenPro ERP Software Solutions  
10061 Talbert Avenue #200  
Fountain Valley, California 92708  
(714) 378-4600 [www.openpro.com](http://www.openpro.com)



### Affordable and Easy Warehouse Management

OpenPro's WMS software is affordable, and easy to install. The system is feature rich with an intuitive user interface. WMS comes in three cost effective versions that maximize efficiency and optimize labor productivity in warehouses of all sizes. Each version provides the basic functions for warehouse operations, including physical inventory, shipping, receiving, and picking, work order processing, time card management, as well as management features such as queries,

OpenPro ERP Software Solutions  
10061 Talbert Avenue #200  
Fountain Valley, California 92708  
(714) 378-4600 [www.openpro.com](http://www.openpro.com)



reporting and barcode labeling. WMS Professional includes advanced features like space management, user defined directed put-away and picks, batched order management, replenishment and cross-docking warning.

### **Support for Barcode Scanning**

WMS state-of-the-art barcode data collection system runs on many popular portable data terminals (PDTs) and PDAs, suitable for use in warehouses. These devices support bar code and RFID reading, mobile computing and wireless networking (WiFi.) The PDT/PDA applications utilize the latest Microsoft® handheld computer operating systems including Windows CE® and Pocket PC®.

### **Flexibility and Upgrade Options**

OpenPro WMS warehouse software has extensible functionality and a SQL database back-end provides a cost-effective upgrade path. Database and portable/workstation licenses can be added as the business grows. Upgrades are available for transition from WMS Batch to RF Standard to RF Professional or from batch/offline to wireless networking. OpenPro uses SQL server which means that an installation can comfortably manage tens of users and hundreds of thousands of SKUs with superb response time.

### **Support for Multiple Natural Languages**

WMS speaks the language of the user. At its core, OpenPro's warehouse management system contains a multi-level data dictionary of display text for its forms and reports. You can manage any form text, PDA/PDT prompt, query, report or error message to conform to your in-house terminology. The data dictionary system provides support for foreign languages. WMS currently runs in warehouses where French, Latin American Spanish, and Castilian Spanish are spoken.

### **Barcode Labels**

Barcode label printing comes standard with OpenPro's warehouse management products with embedded Bar Code Creator. By upgrading to OpenPro's developer, you can update or create any label format with different barcode symbologies and data from the OpenPro standard database.

### **Import-Export Utility**

OpenPro ERP Software Solutions  
10061 Talbert Avenue #200  
Fountain Valley, California 92708  
(714) 378-4600 [www.openpro.com](http://www.openpro.com)



Utility software is provided to populate the warehouse management system database and to export from it. Frequency of transfer is also established as an option. Data transfer runs as a background operation and does not require user intervention.



### **Motorola MC3000 Features for warehousing.**

The Motorola MC3090 from Symbol Technologies is a lightweight, rugged mobile computer ideal for scan intensive environments that require high-quality data capture throughout the enterprise. The MC3090 offers a variety of features, including one-dimensional (1D) laser and 2D image scanning, color or monochrome display, batch or wireless communications, and three different keypad options.

#### **Light, ergonomic design**

Reduces user fatigue for higher productivity in scan-intensive applications

#### **Well-balanced gun form factor option**

Comfortable to use in intensive scan environments for prolonged periods

#### **Visual scanning feedback on the sides (gun only)**

Provides visual in addition to audio feedback without having to reorient the device

#### **Laser versions with adjustable rotating scan turret with left, right and front positions**

User can adjust the scanning positions for maximum comfort and productivity

#### **320 x 320 resolution color/mono display (with backlight)**

30% higher resolution than 1/4 VGA allows easy viewing in many environments for increased accuracy

#### **Wireless 802.11b/g/a LAN connectivity**

OpenPro ERP Software Solutions  
10061 Talbert Avenue #200  
Fountain Valley, California 92708  
(714) 378-4600 [www.openpro.com](http://www.openpro.com)



Provides real-time data exchange for maximum productivity

**Bluetooth option**

Enables use of and wireless connection to a range of devices

**Rugged design**

Withstands multiple 4-foot drops (1.2 m) to concrete and up to 500 tumbles

**IP54-rated sealing**

Protects against water and dust for reliable performance in rough environmental conditions

**Intel XScale PXA270 processor and Microsoft Windows CE operating system**

Delivers high-speed CPU performance through familiar interfaces with wide software application support

**Keyboard options include 28, 38 and 48 keys**

Provides multiple data entry modes for maximum efficiency

**Device management with Mobility Services Platform (MSP)**

Enables real-time monitoring of critical mobile computer and wireless infrastructure parameters

**Please contact OpenPro if you need any assistance in your bar-coding and warehousing needs.**



## OpenPro ERP Software

**10061 Talbert Ave Suite 200  
Fountain Valley, CA 92708  
Telephone 714-378-4600  
Fax 714-964-1491  
[www.openpro.com](http://www.openpro.com)  
[infoop@openpro.com](mailto:infoop@openpro.com)**

OpenPro ERP Software Solutions  
10061 Talbert Avenue #200  
Fountain Valley, California 92708  
(714) 378-4600 [www.openpro.com](http://www.openpro.com)