



**OPENPRO.COM**

**OpenPro ERP Software Installation Guide**

**10061 Talbert Ave Suite 228**

**Fountain Valley, CA 92708 USA**

**Phone 714-378-4600**

**Fax 714-964-1491**

[www.openpro.com](http://www.openpro.com)

[infoop@openpro.com](mailto:infoop@openpro.com)

**OpenPro Installation of Software 3-5-04**

## **OpenPro Installation Instructions**

- 1. Install Operating System, This has been assumed to be done. The rest of the manual is broken down into Windows and Unix. Unix uses the same install instructions for Intel Linux, SCO Unix, UNIX, AT&T, HP, IBM, Sun.**
- 2. Install the web server, either IIS for Windows or Apache version 2 for Unix or Windows.**
- 3. Install and Configure the PHP version 4 series for the web server. If purchased object and not source this has instructions on IONCUBE installation.**
- 4. Database Server either MYSQL, MSSQL, ORACLE or IBM DB2.**
- 5. Install OpenPro programs.**
- 6. Register OpenPro programs.**
- 7. Setup of OpenPro.**

# **OpenPro Operating System Requirement**

## **1. Installation Instructions**

### **Install Operating System**

**The rest of the manual is broken down into Windows and Unix.**

**Windows requirements 2000 or 2003 servers.**

**Unix uses the same install instructions for Intel Linux Redhat, SUSE, Mandrake, and others**

**SCO Unix Version 5**

**AT&T UNIX**

**Hewlett Packard HP-UX**

**IBM AIX, OS-400 or MVS**

**Sun Solaris version 8 or 9.**

### **Assumptions – the operating system is installed configured and setup to host pages.**

We are locating the OpenPro php source into a new folder openpro under your root html documents folders.

Windows server web documents are located in the c:\inetpub\wwwroot folder. Where in the example we are putting OpenPro into c:\inetpub\wwwroot\openpro

Unix servers web documents are located in the /opt/apache2/htdocs folder. Where in the example we are putting OpenPro into /opt/apache2/htdocs/openpro folder.

## **OpenPro Web Server System Requirement**

### **2. Web Server**

**IIS for windows Operating System installs as part of the operating system.**

**Windows requirements 2000 or 2003 servers. For demo purposes we have instruction on how to install on a XP Professional work station.**

**Unix depending on the version will install the web server if not Unix Apache 2 installation instructions are located at the following location:**

**<http://httpd.apache.org/docs-2.0/>**

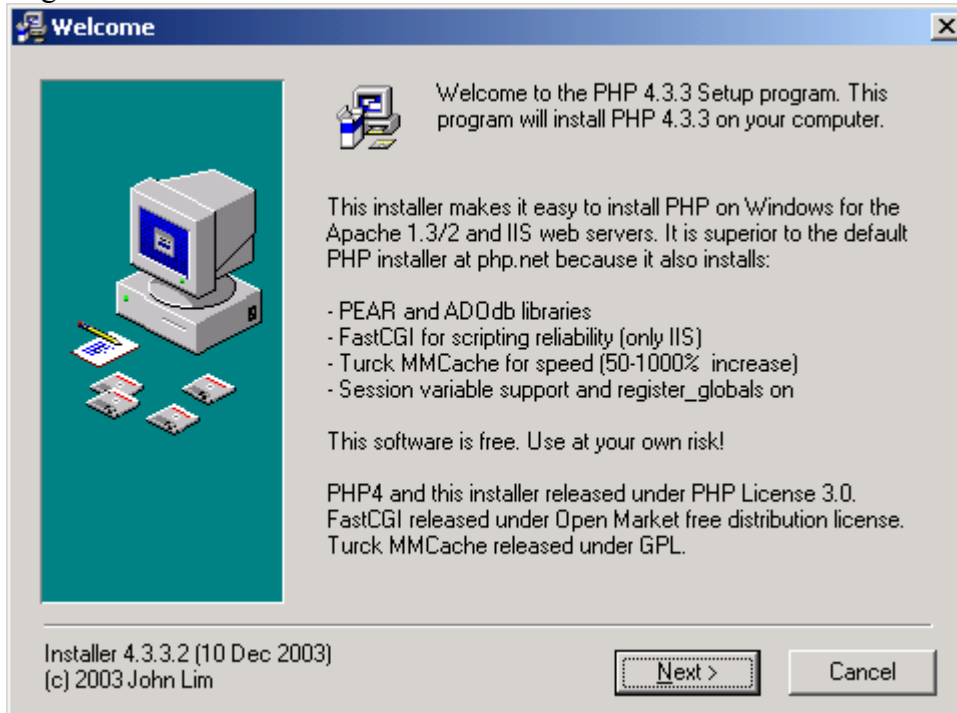
## OpenPro Operating System Requirement

### 3. Installation of PHP and IONCUBE

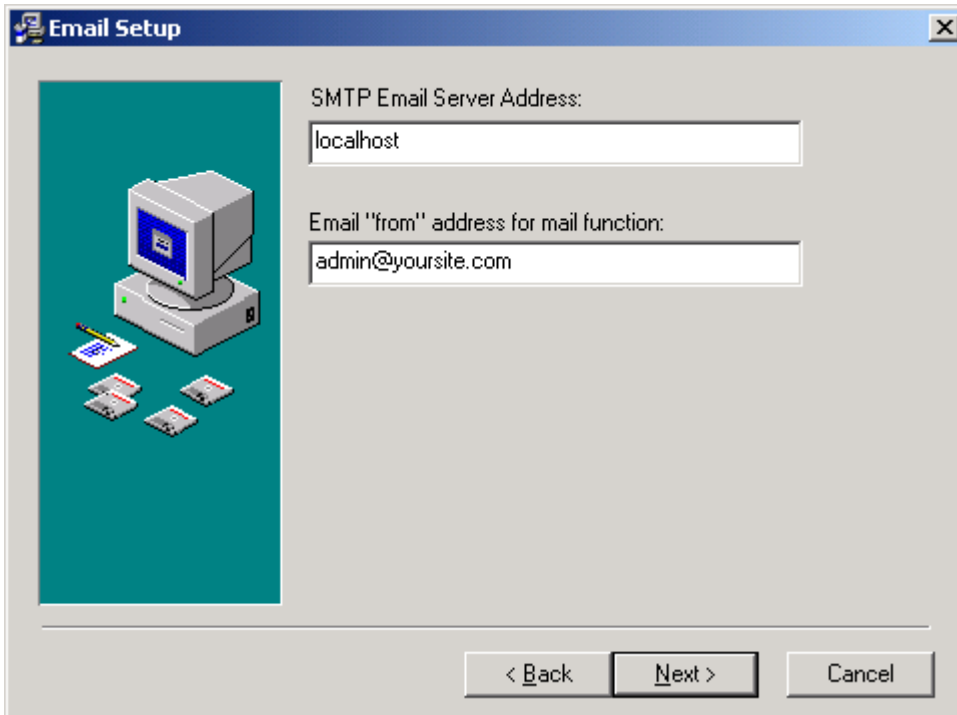
#### WINDOWS PORTION

<http://www.php.net/downloads.php> is where php can be download and its load on the cd php folder. Php-version#-installer.exe

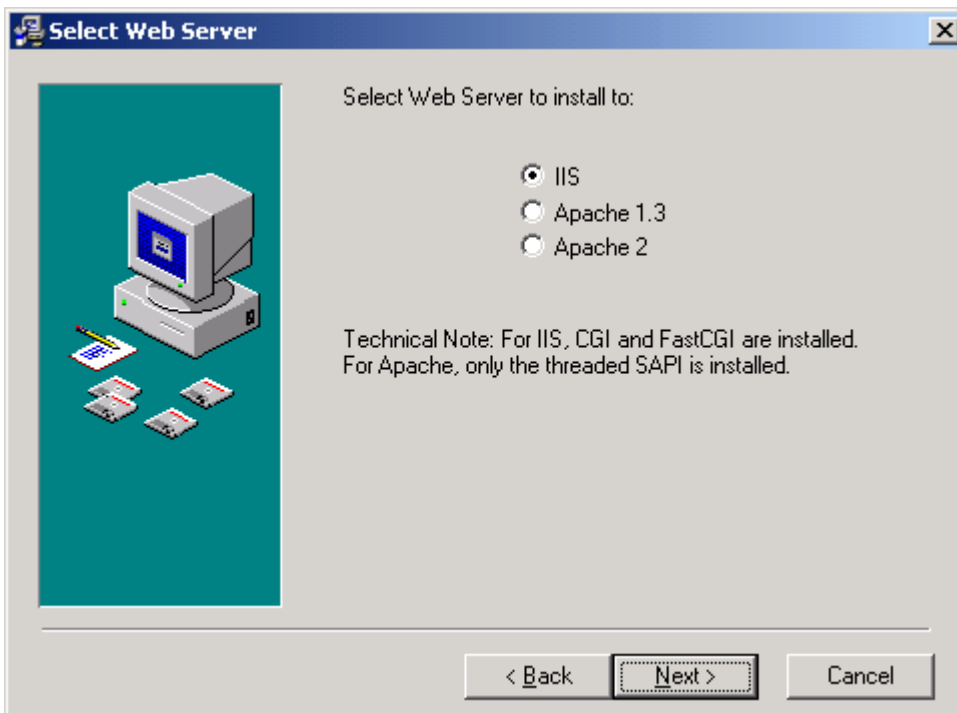
Begin installation double click on the installer exe.



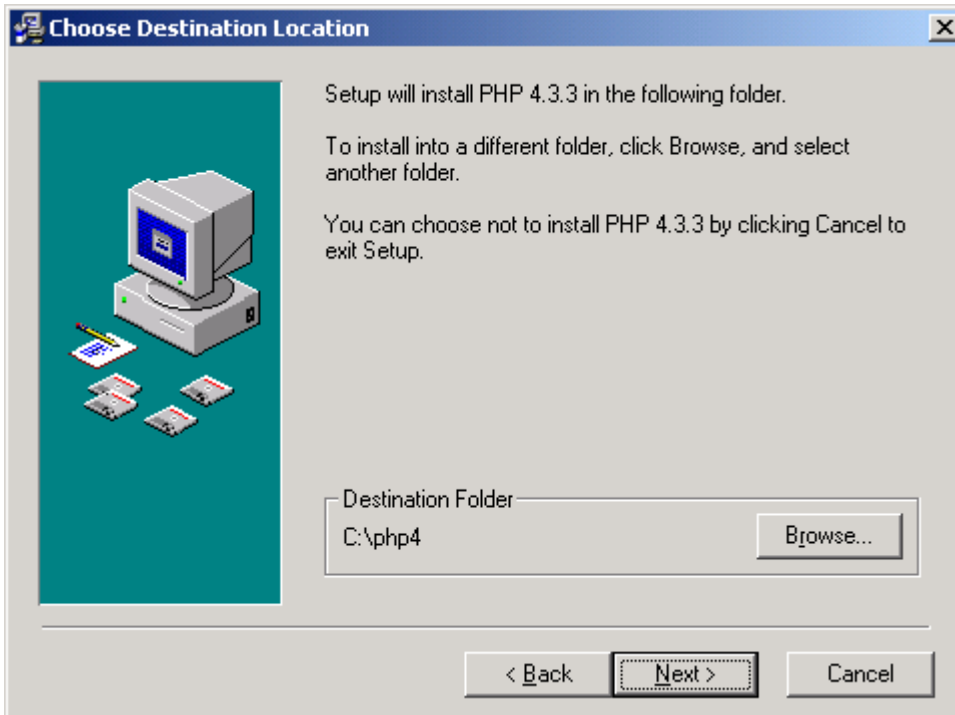
Next



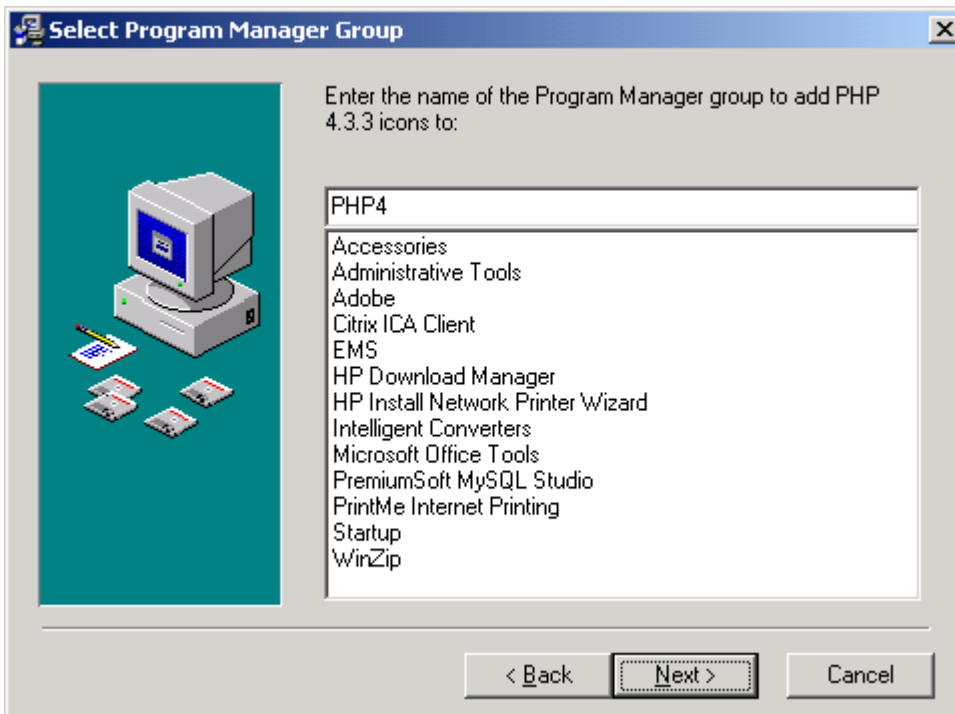
If your SMTP server is not local to the machine installing PHP, change it to your mail server. Set the E-Mail to any name (preferably admin), @, and the website or IP (not including WWW).



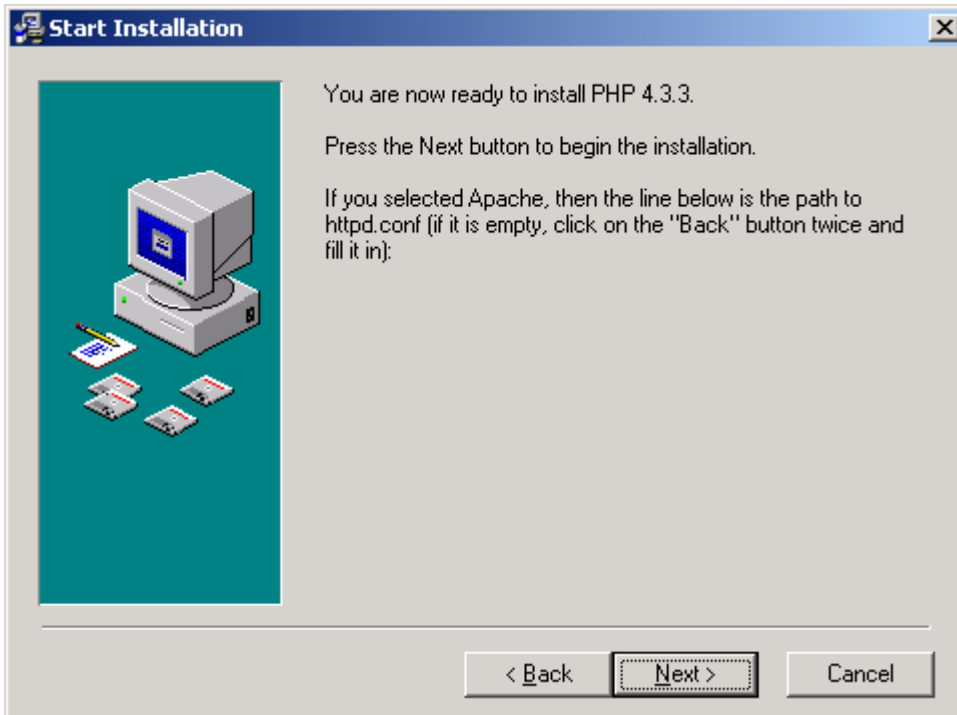
IIS -> Next select your web server windows default is IIS.



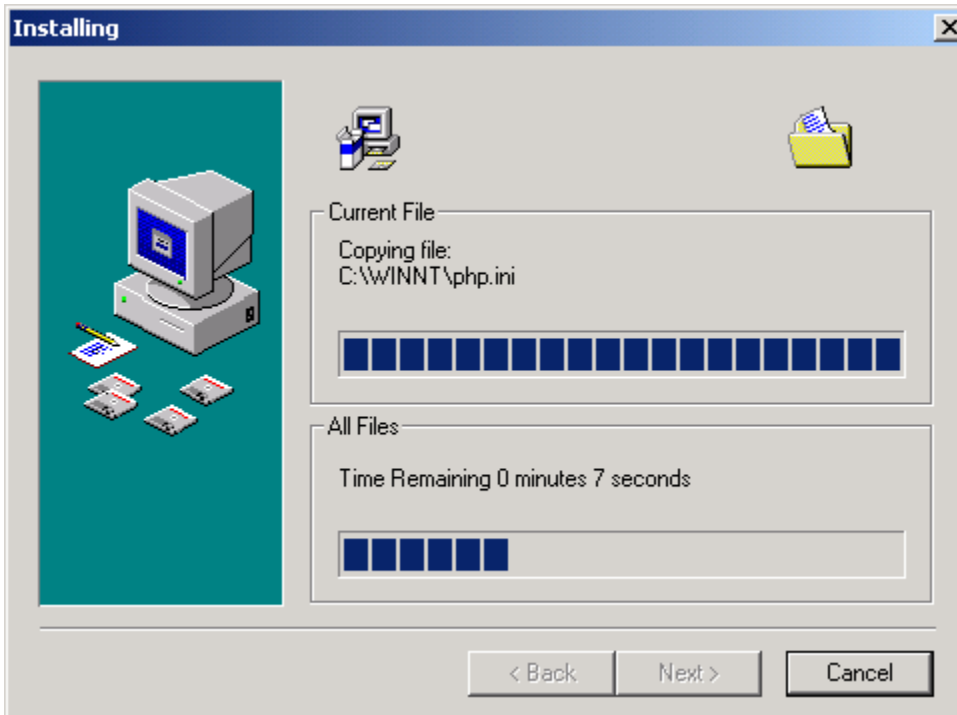
The install folder can be anywhere (C:\php4 is preferred).



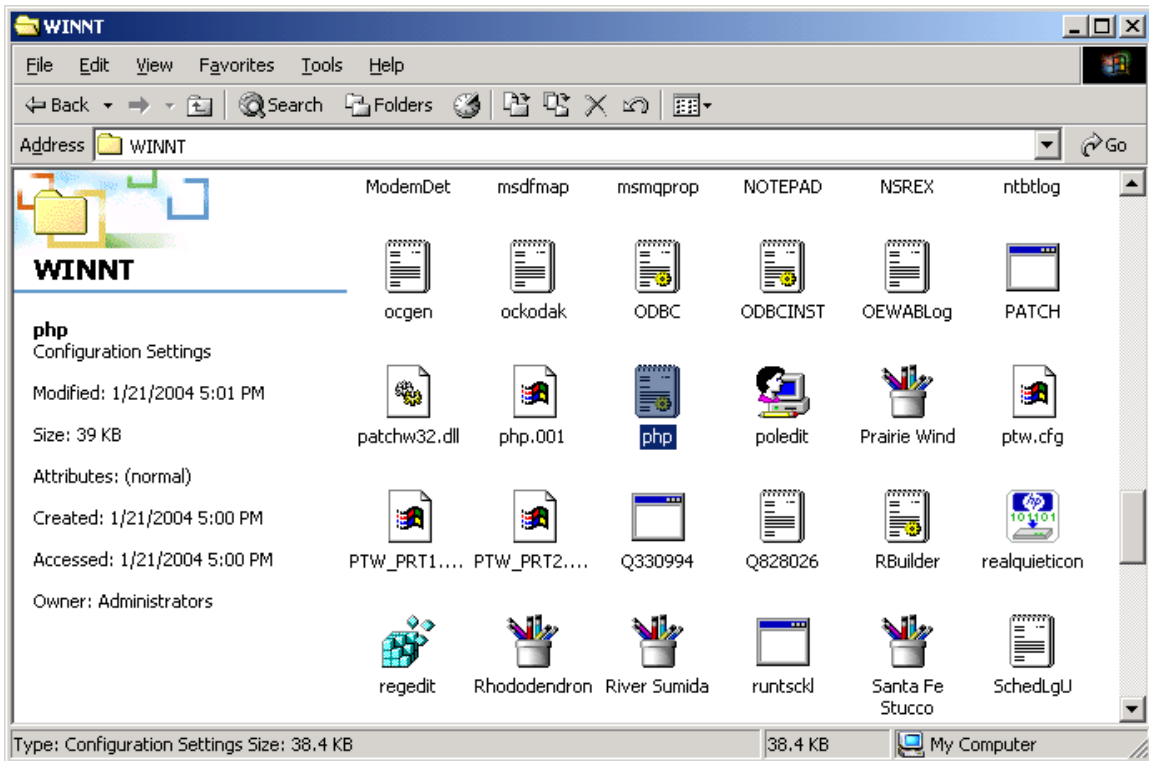
The Start Menu name can be anything.



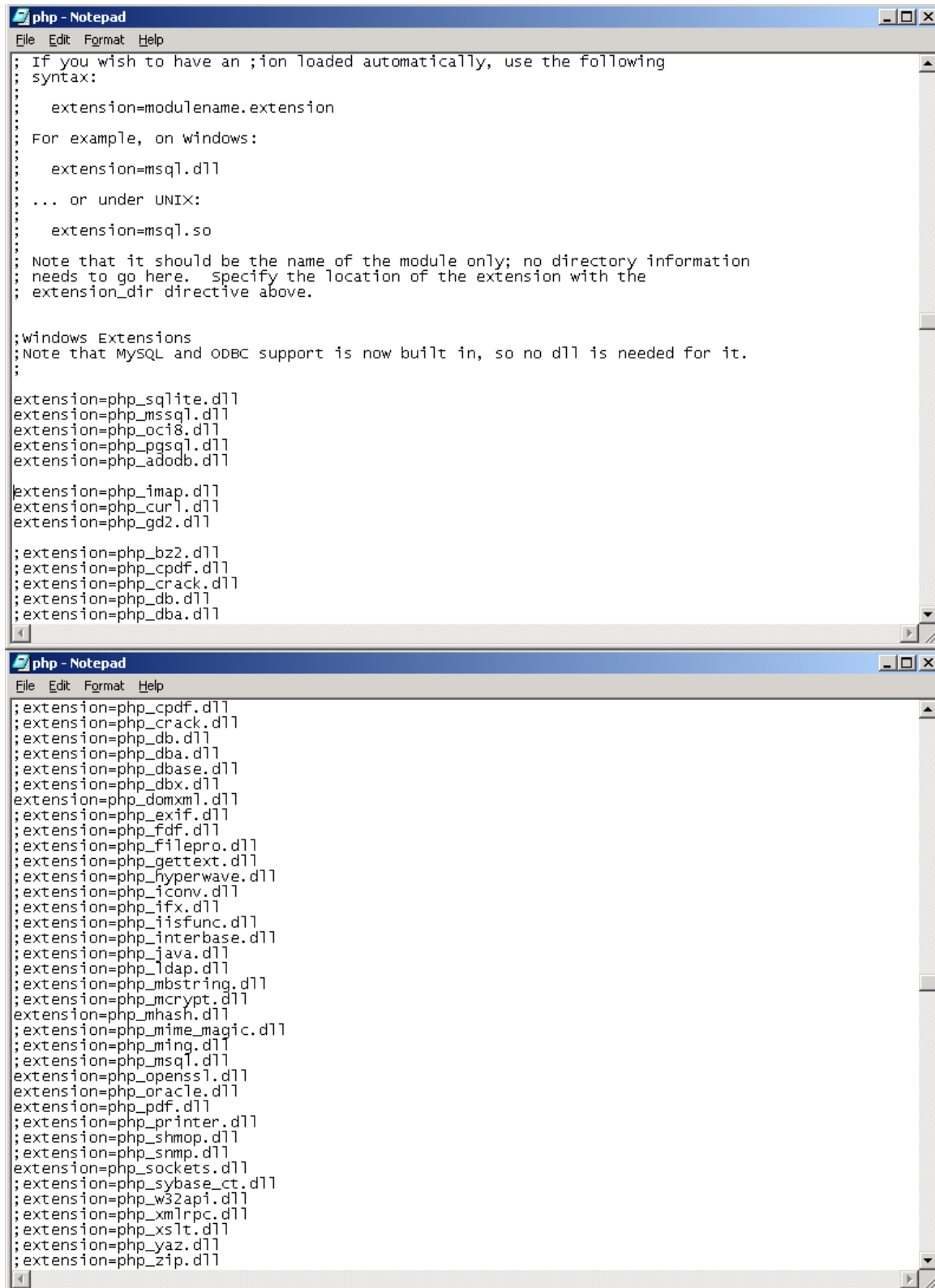
Next.



Installation.



Go to the c:\Windows folder, find php.ini and edit it. Or on our cd we have a sample php.ini file you can use located in the php folder of the installation cd.



```
php - Notepad
File Edit Format Help
; If you wish to have an ;ion loaded automatically, use the following
; syntax:
;
;   extension=modulename.extension
;
; For example, on windows:
;
;   extension=msql.dll
;
; ... or under UNIX:
;
;   extension=msql.so
;
; Note that it should be the name of the module only; no directory information
; needs to go here. Specify the location of the extension with the
; extension_dir directive above.

;Windows Extensions
;Note that MySQL and ODBC support is now built in, so no dll is needed for it.
;
extension=php_sqlite.dll
extension=php_mssql.dll
extension=php_oci8.dll
extension=php_pgsq1.dll
extension=php_adodb.dll

extension=php_imap.dll
extension=php_curl.dll
extension=php_gd2.dll

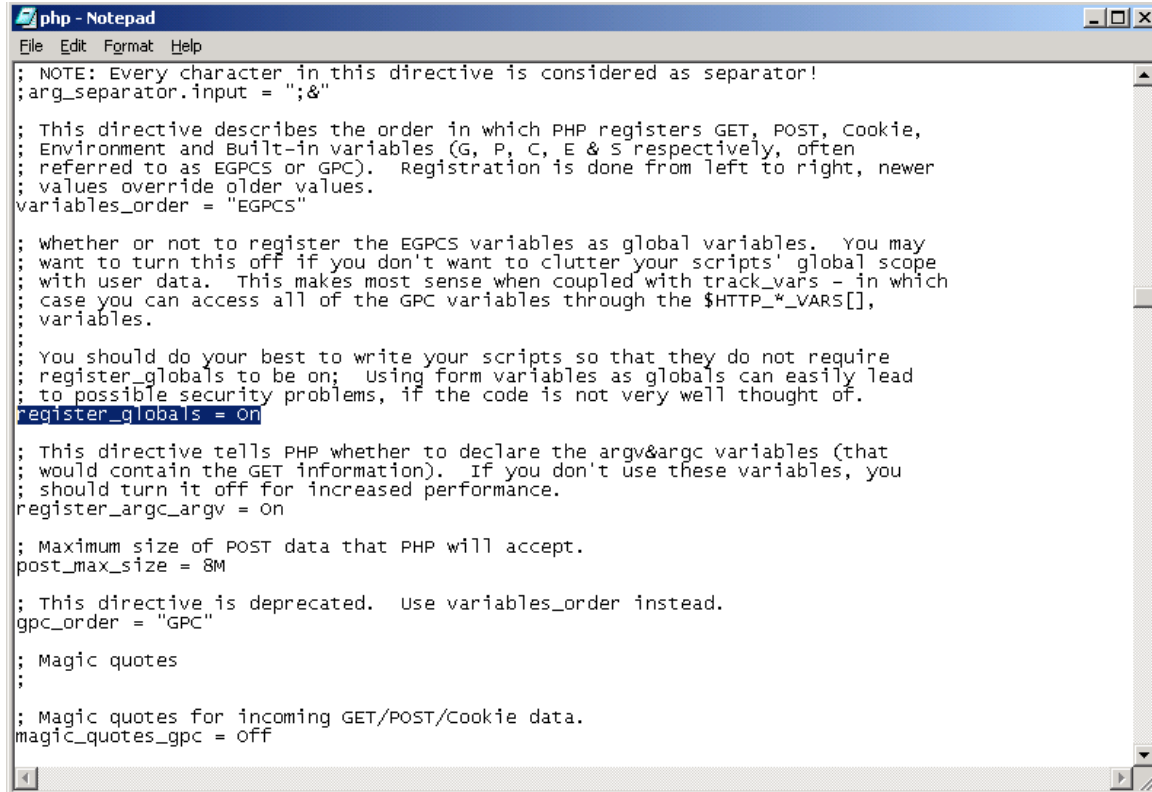
;extension=php_bz2.dll
;extension=php_cpdpf.dll
;extension=php_crack.dll
;extension=php_db.dll
;extension=php_dba.dll

php - Notepad
File Edit Format Help
;extension=php_cpdpf.dll
;extension=php_crack.dll
;extension=php_db.dll
;extension=php_dba.dll
;extension=php_dbase.dll
;extension=php_dbx.dll
extension=php_domxml.dll
;extension=php_exif.dll
;extension=php_fdf.dll
;extension=php_filepro.dll
;extension=php_gettext.dll
;extension=php_hyperwave.dll
;extension=php_iconv.dll
;extension=php_ifx.dll
;extension=php_iisfunc.dll
;extension=php_interbase.dll
;extension=php_java.dll
;extension=php_ldap.dll
;extension=php_mbstring.dll
;extension=php_mcrypt.dll
extension=php_mhash.dll
;extension=php_mime_magic.dll
;extension=php_ming.dll
;extension=php_mssql.dll
extension=php_openssl.dll
extension=php_oracle.dll
extension=php_pdf.dll
;extension=php_printer.dll
;extension=php_shmop.dll
;extension=php_snmp.dll
extension=php_sockets.dll
;extension=php_sybase_ct.dll
;extension=php_w32api.dll
;extension=php_xmlrpc.dll
;extension=php_xslt.dll
;extension=php_yaz.dll
;extension=php_zip.dll
```

Find the extensions and remove any semicolons from php\_sqlite.dll, php\_mssql.dll, php\_oci8.dll, php\_pgsq1.dll, php\_adodb.dll, php\_imap.dll, php\_curl.dll, php\_gd2.dll,

php\_domxml.dll, php\_mhash.dll, php\_openssl.dll, php\_oracle.dll, php\_pdf.dll, and php\_sockets.dll.

## UNIVERSAL PHP.INI PORTION



```
php - Notepad
File Edit Format Help
; NOTE: Every character in this directive is considered as separator!
;arg_separator.input = "&"

; This directive describes the order in which PHP registers GET, POST, Cookie,
; Environment and Built-in variables (G, P, C, E & S respectively, often
; referred to as EGPCS or GPC). Registration is done from left to right, newer
; values override older values.
variables_order = "EGPCS"

; whether or not to register the EGPCS variables as global variables. You may
; want to turn this off if you don't want to clutter your scripts' global scope
; with user data. This makes most sense when coupled with track_vars - in which
; case you can access all of the GPC variables through the $HTTP*_VARS[],
; variables.
;
; You should do your best to write your scripts so that they do not require
; register_globals to be on; Using form variables as globals can easily lead
; to possible security problems, if the code is not very well thought of.
register_globals = on

; This directive tells PHP whether to declare the argv&argc variables (that
; would contain the GET information). If you don't use these variables, you
; should turn it off for increased performance.
register_argc_argv = on

; Maximum size of POST data that PHP will accept.
post_max_size = 8M

; This directive is deprecated. Use variables_order instead.
gpc_order = "GPC"

; Magic quotes
;
; Magic quotes for incoming GET/POST/Cookie data.
magic_quotes_gpc = off
```

Ensure register\_globals is set to On. Save.

## LINUX/APACHE PORTION



```
home2.compuall.net - PuTTY
root@home2:~/opt/apache2/conf# pico httpd.conf
```

Change directory to the Apache folder / conf.

Then run pico, vi, or an editor of preference on httpd.conf. Be sure you have write access to the file.

```
home2.compuall.net - PuTTY
UW PICO(tm) 4.0 File: httpd.conf

#
# DirectoryIndex: sets the file that Apache will serve if a directory
# is requested.
#
# The index.html.var file (a type-map) is used to deliver content-
# negotiated documents. The MultiViews Option can be used for the
# same purpose, but it is much slower.
#
DirectoryIndex index.html index.html.var index.php
#
# AccessFileName: The name of the file to look for in each directory
# for additional configuration directives. See also the AllowOverride
# directive.
#
^G Get Help ^O WriteOut ^R Read File ^Y Prev Pg ^K Cut Text ^C Cur Pos
^X Exit ^J Justify ^W Where is ^V Next Pg ^U UnCut Text ^T To Spell
```

Find the line that holds the DirectoryIndex options. Each index is separated by a space. Make sure that both index.html and index.php are listed, and index.html precedes index.php. Examples of httpd.conf are in the apache folder on the cd.

# IONCUBE Installation

## System Requirements

Make sure your system meets the following requirements.

### Operating System

- Unix/Linux Operating System

**Windows Users: Please take a look at the [Windows IIS Setup](#) document.**

### Secure Certificate

- SSL (HTTPS) Recommended

Using a SSL or Secure Certificate will show your customers that ordering from your website is safe and secure.

### PHP

- PHP Version > 4.1.x

Most servers are already setup with the latest PHP version. To learn more, visit <http://www.php.net>.

### php.ini Settings

Every PHP install has a php.ini file. The php.ini file is the main configuration file for your PHP install. Remember to restart your web server every time you update your php.ini file. There are two ways to verify that you have the following set in your php.ini file. The first way is to locate the php.ini file on your server, open the file, and search on the following variables. Change accordingly. The second way is to create a phpinfo() file on your web server and view it via any web browser. The second method is for more advanced users. Make sure your php.ini file has the following variables set.

- register\_globals = On
- register\_argc\_argv = On
- open\_basedir = no value
- short\_open\_tag = On
- safe\_mode = Off

### Zend vs. IonCube

Your ModernBill is available in two encoded versions, Zend and IonCube. The only difference between the two is that Zend must be installed on your server before you can use the Zend encoded version, whereas the IonCube version is pre-installed with your ModernBill system.

- To learn more about Zend Optimizer™, visit the Zend website at <http://www.zend.com>.
- To learn more about IonCube Runtime Decoder (Included), visit the IonCube website at <http://www.ioncube.com>.

### CURL is required for credit card processing online with ecommerce

- cURL with SSL enabled either compiled in PHP or available via the CLI (command line interface)

To learn more about cURL, please view the [cURL Setup](#) document.

## 4. Database Installation Process mysql

**Look at the detail install MYSQL, MSSQL, ORACLE or IBM DB2 located on the database cd.**

MySQL installation instructions are located at:

<http://dev.mysql.com/doc/>

After you install Mysql program located in the mysql folder under linux and windows.

Our database is in backup format located on the cd under \openpro\database folder.

After the installation you need to create the OPENDEMO database.

### Step 1 - Create a new database for your OpenPro ERP system

You can create your database by using a MySQL GUI such as PHPMyAdmin or you can use the command line as follows:

Here is the MySQL command: `mysqladmin -u USERNAME -h localhost -p create DBNAME`

Replace the **BOLD** variables with your own variables. DBNAME should be OPENPRO

More MySQL Command Line Help - [Adding New Users to MySQL](#)

## Step 2 – Restore the demo database from the OpenPro cd to your new created database.

Then in the OpenPro\mysql folder on the cd is opendemo.zip and openempty.zip

Opendemo is our demo database with demo company and information loaded.

Openempty is like opendemo but no customers, etc file are loaded.

Restore using mysql

**If you have to re-build your database from scratch, you can easily restore the `mysqldump` file by using the `mysql` command. This method is usually used to recreate or rebuild the database from scratch.**

**Here's how you would restore your `opendemo.sql` file to the OpenPro database.**

```
mysql -u openpro -p support openpro < opendemo.sql
```

**Easy isn't it ? Here's the general format you would follow:**

```
mysql -u [username] -p [password] [database_to_restore] < [backupfile]
```

Then after creating and restoring the database, you can then login to OpenPro system.

## **OpenPro Operating System Requirement**

### **5. OpenPro Installation Process**

**Extract the openproXX.zip file from the cd openpro folder, into the httpd folder that you want to use for the lookup.**

We are locating the OpenPro php source into a new folder openpro under your root html documents folders of your web server.

Windows server web documents are located in the c:\inetpub\wwwroot folder. Where in the example we are putting OpenPro into c:\inetpub\wwwroot\openpro

Unix servers web documents are located in the /opt/apache2/htdocs folder. Where in the example we are putting OpenPro into /opt/apache2/htdocs/openpro folder.

Other servers use /var/www/html so you need to know how your web server is setup and configured.

Configure system with OpenPro

**Edit sqlinfo.php file in the openpro folder.**

```
<?
$sqlhost="localhost";
$sqluser="databaseuser";
$sqlpass="databasepassword";
$sqldb="openpro";
$sqltype="MySQL";
?>
```

Change the databaseuser and databasepassword to openpro and support of you are using our defaults.

sqltype = MySQL, MsSQL, DB2, ORACLE depending on the purchase product.

Test connection to your database using sql commands.

E-commerce configuration files are

In the ecommerce folder

Openpro\_main.inc.

```
<?php
```

```
//POS Folder
```

```
$posfolder="../";
```

```
$filefolder="../";
```

```
$store_id="DEMO";
```

```
$companyid="DEMO";
```

```
?>
```

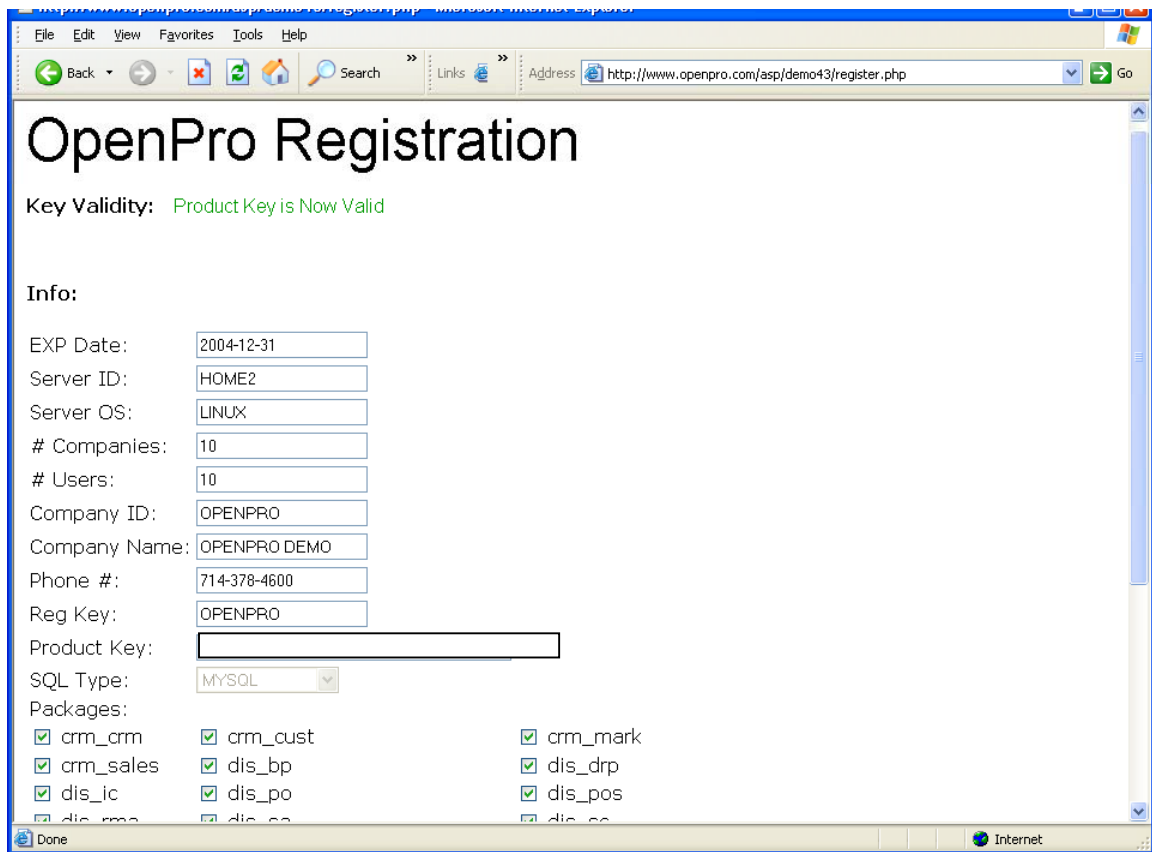
This outlines the location of files for e-commerce system, the company id and the store id.

# OpenPro Operating System Requirement

## 6. OpenPro Registration Installation Process

open up your explorer and run the program register.php under the openpro folder.

**<http://localhost/openpro/register.php>**



The screenshot shows a web browser window displaying the 'OpenPro Registration' form. The address bar shows the URL 'http://www.openpro.com/asp/demo43/register.php'. The page title is 'OpenPro Registration'. Below the title, a green message reads 'Key Validity: Product Key is Now Valid'. The form is titled 'Info:' and contains the following fields and options:

- EXP Date: 2004-12-31
- Server ID: HOME2
- Server OS: LINUX
- # Companies: 10
- # Users: 10
- Company ID: OPENPRO
- Company Name: OPENPRO DEMO
- Phone #: 714-378-4600
- Reg Key: OPENPRO
- Product Key: (empty text box)
- SQL Type: MYSQL (dropdown menu)
- Packages: (checkboxes for various modules)

Package Name	Checked
crm_crm	<input checked="" type="checkbox"/>
crm_sales	<input checked="" type="checkbox"/>
dis_ic	<input checked="" type="checkbox"/>
dis_ma	<input checked="" type="checkbox"/>
crm_cust	<input checked="" type="checkbox"/>
dis_bp	<input checked="" type="checkbox"/>
dis_po	<input checked="" type="checkbox"/>
dis_co	<input checked="" type="checkbox"/>
crm_mark	<input checked="" type="checkbox"/>
dis_drp	<input checked="" type="checkbox"/>
dis_pos	<input checked="" type="checkbox"/>
dis_co	<input checked="" type="checkbox"/>

Fill out the form as per the attached sheet that came with the software.

**If everything was filled out correctly it will say  
Product Key is now Valid on the top of the form.**

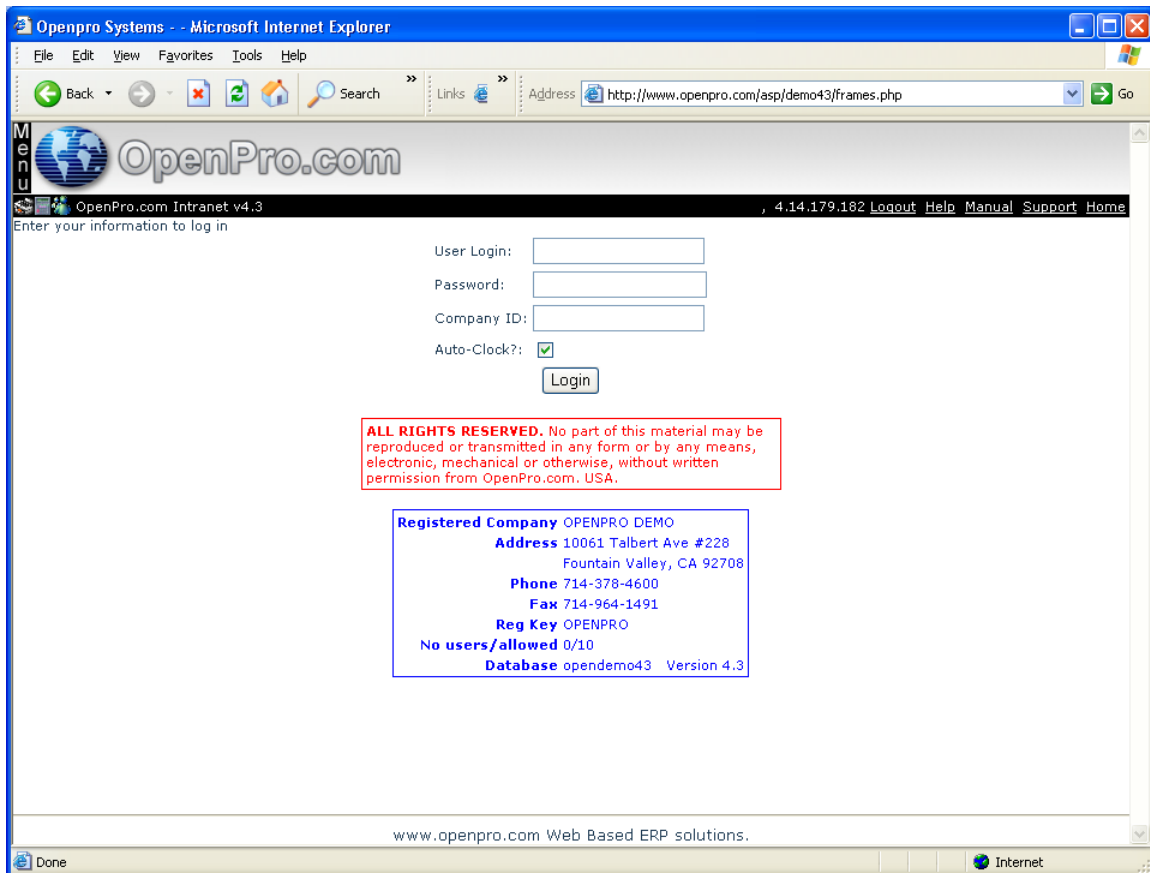
# OpenPro Operating System Requirement

## 7. OpenPro test and Setup Process

From your browser, go to

<http://localhost/openpro/>

it should take you to the following page. If any errors show up make a note of the error and send to supporttop @openpro.com



The demo system you can login as admin with the password of admin  
Then go to rules setup and maintain the system rules.

See detailed setup instructions in the setup manual.



**OPENPRO.COM**

**OpenPro ERP Software Installation Guide**

**10061 Talbert Ave Suite 228**

**Fountain Valley, CA 92708 USA**

**Phone 714-378-4600**

**Fax 714-964-1491**

[www.openpro.com](http://www.openpro.com)

[infoop@openpro.com](mailto:infoop@openpro.com)

OpenPro Installation of Software END