



OpenPro ERP Software

Supported Browser and setup for use with OpenPro

10061 Talbert Ave Suite 228

Fountain Valley, CA 92708

Telephone 714-378-4600

Fax 714-964-1491

www.openpro.com

infoop@openpro.com

OpenPro training demo fundamentals guide

Table of Contents

Introduction	4
Browser and Setup	5
Login to OpenPro	6
Application Menu Uses	8
Exit Fundamentals	10
Application Fundamentals	11-17
Printers and how to setup printers for OpenPro	20

Introduction

Thank you for your interest in OpenPro. This Demonstration Guide is designed to orient you through OpenPro. The guide contains startup information as well as a more detailed overview of the basic business flow. We hope you'll find the scenarios in the overview to be useful. We've loaded the same set of data used to populate the overview screen shots into the database you'll be accessing during your evaluation period.

After your evaluation, we would like to know what your thoughts are and how we can help you to make the proper choices about how OpenPro can help your business. Please don't hesitate to contact us at salesop@openpro.com or call 714-378-4600. And again, thank you for your interest. We truly value your opinions and suggestions.

On-line training processes

On the www.openpro.com website you can find our on-line training, that walks you thru the processes in this manual.

This has general information on the OpenPro ERP packages. But also has video training sessions by application.

Web browsers supported by OpenPro

The open source Gecko layout engine was developed as part of the Mozilla project.

Mozilla

Netscape Navigator (version 5 or Later.)

Mozilla Firefox (formerly Firebird and Phoenix)

Explorer Version 5.5 and Above

AOL

Mac OSX Camino for Mac (Formerly Chimera)

Other less used browsers may work but our support group will not support are:

does not support

- Epiphany, GNOME's current default browser
- K-Meleon for Windows
- Kazehakase very light GTK2 web browser for GNU/Linux
- Beonex Communicator
- IBM Web Browser for OS/2
- Aphrodite
- Salamander
- Skipstone
- BackArrow (based on Skipstone)
- embedded in AOL's interface on Mac OS X and in Compuserve's interface since version 7

Trident-based browsers

The proprietary Trident layout engine was developed by Microsoft for use in their web browser, Internet Explorer.

- Avant Browser

- Crazy Browser
- iRider
- MSN Explorer
- Maxthon (formerly MyIE2)
- NeoPlanet

NetCaptor

The open source KHTML layout engine was developed by the KDE project.

- **Konqueror**
- Safari
- ABrowse
- OmniWeb (4.5 and later)
- SkyKruzer
- Shiira

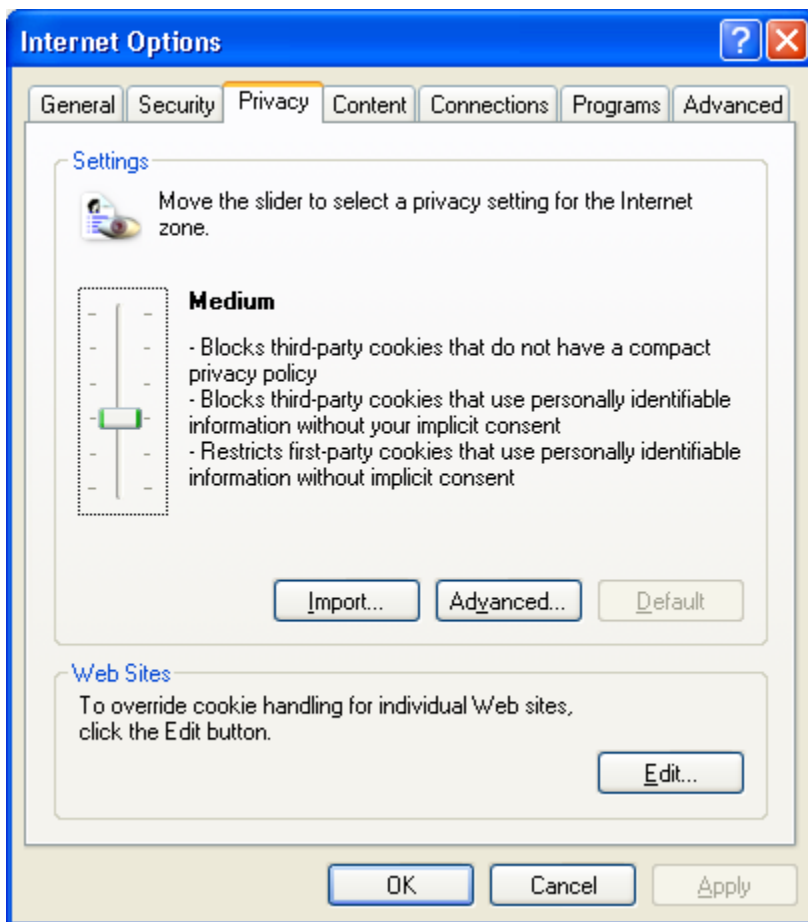
Other Browsers

- Dillo
- IBrowse
- AWeb
- Voyager
- Espial Escape
- HotJava
- Arachne

Log In to OpenPro ERP software Brower setup

- This section details the steps required to login to your evaluation copy of the OpenPro ERP software. This demo system works on any client from Windows 98, 200X, CE and XP, or Apple systems with browser or Linux operating systems.

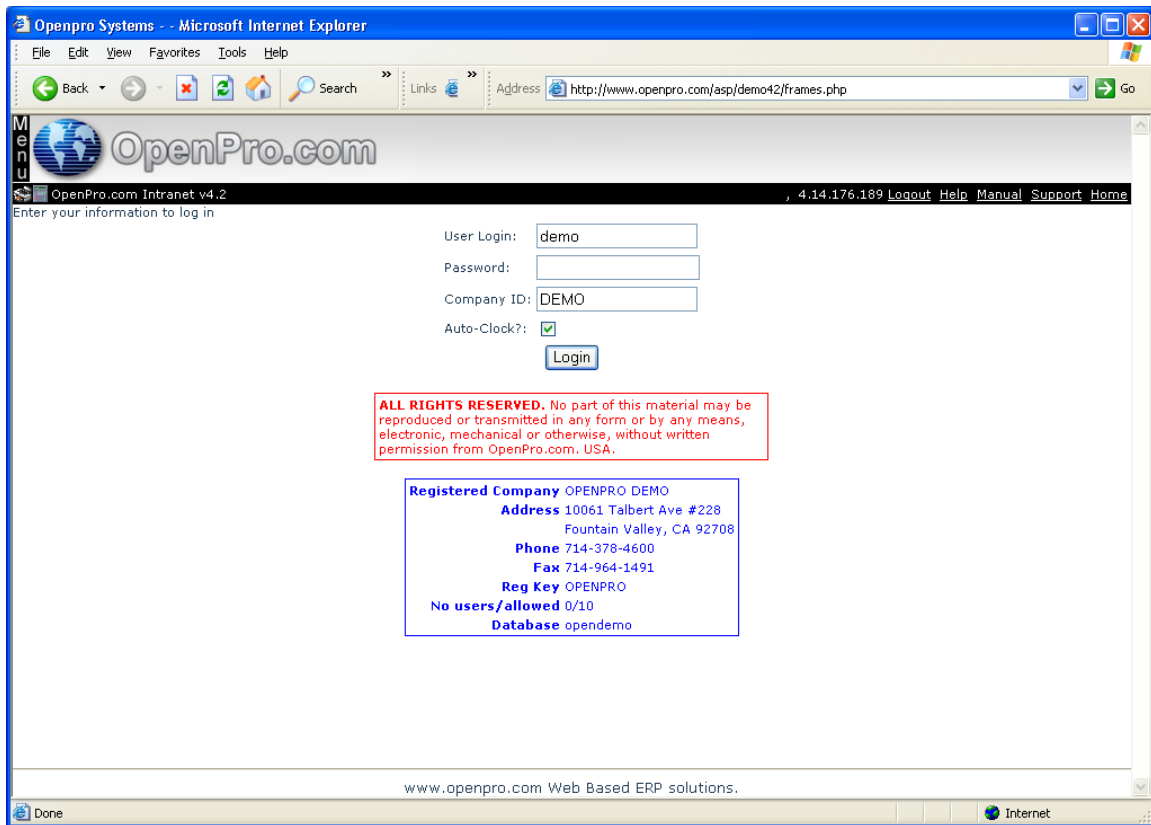
The **configuration of your browser** must match the following options.
To configure your browser go to **TOOLS > OPTIONS**
Security and Privacy needs to be set to **MEDIUM**, and to allow cookies.



If it is not set to Medium you will receive some errors logging into the system.

**Figure 1.1: Login Screen for OpenPro Client for Windows
Note**

This is a fully functional OpenPro Client. It is hard-coded to access a demonstration database on our company server. Due to heavy usage we must limit the number of concurrent connections to the software. If you don't connect the first time you try, please try again later.



When logging into the OpenPro Standard Solution, you are presented with the following options:

User Login: Enter the Username we assigned you when you requested your evaluation copy.

- This will be the same Username as the Username you use to log into the OpenPro website.

Password: Enter the password we assigned you when you requested your evaluation copy.

- This will be the same Username as the Username you use to log into the OpenPro website The password you type into this field will not display on your screen, but will be represented by asterisks (*) for security purposes.

Company ID: Enter the upper case **DEMO**.

On the top menu bar, to the far right of the screen, the following buttons are available:

LOGOUT: brings you back to this login screen.

HELP: Click to see detail help information about the screen you are working on.

MANUAL: Detailed manuals about each application, including policy and procedures.

SUPPORT: Online support during normal business hours, or can be emailed at supporttop@openpro.com .

HOME: Takes you back to the main menu screen.

Once your Username and password have been successfully authenticated, the main application desktop will appear, as shown below.

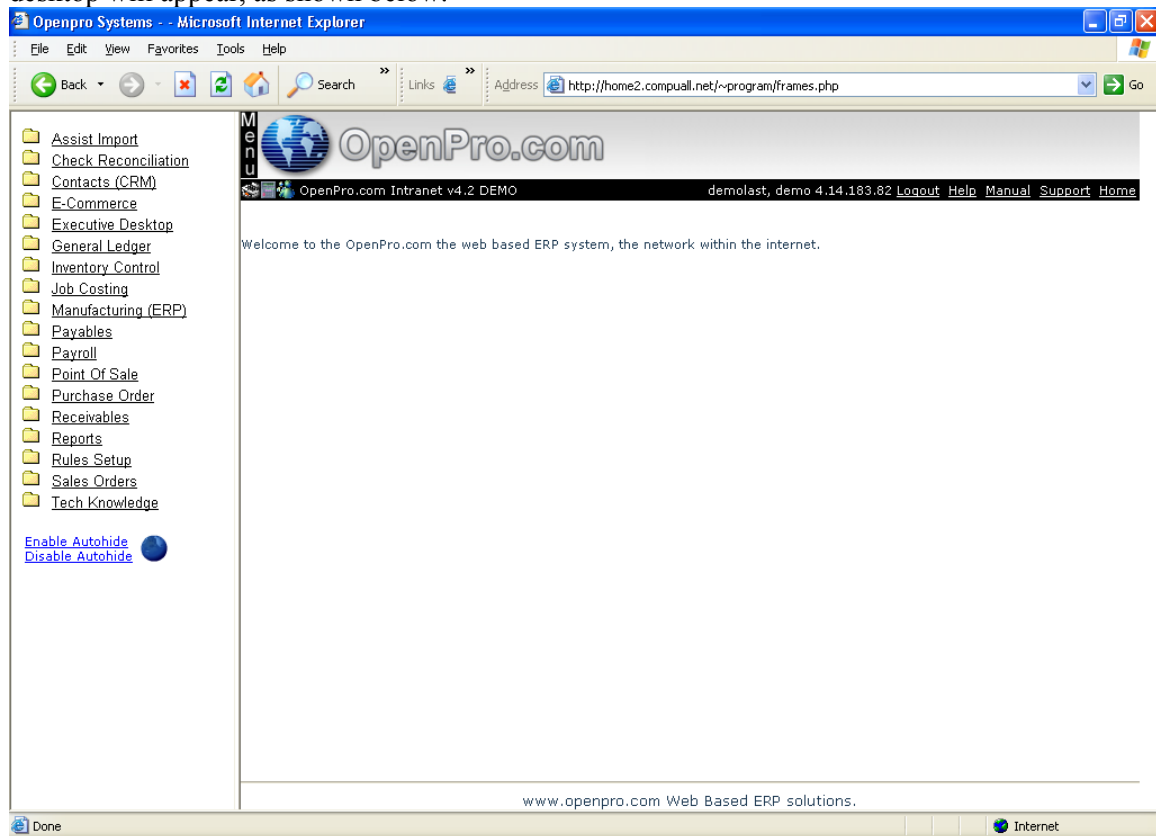
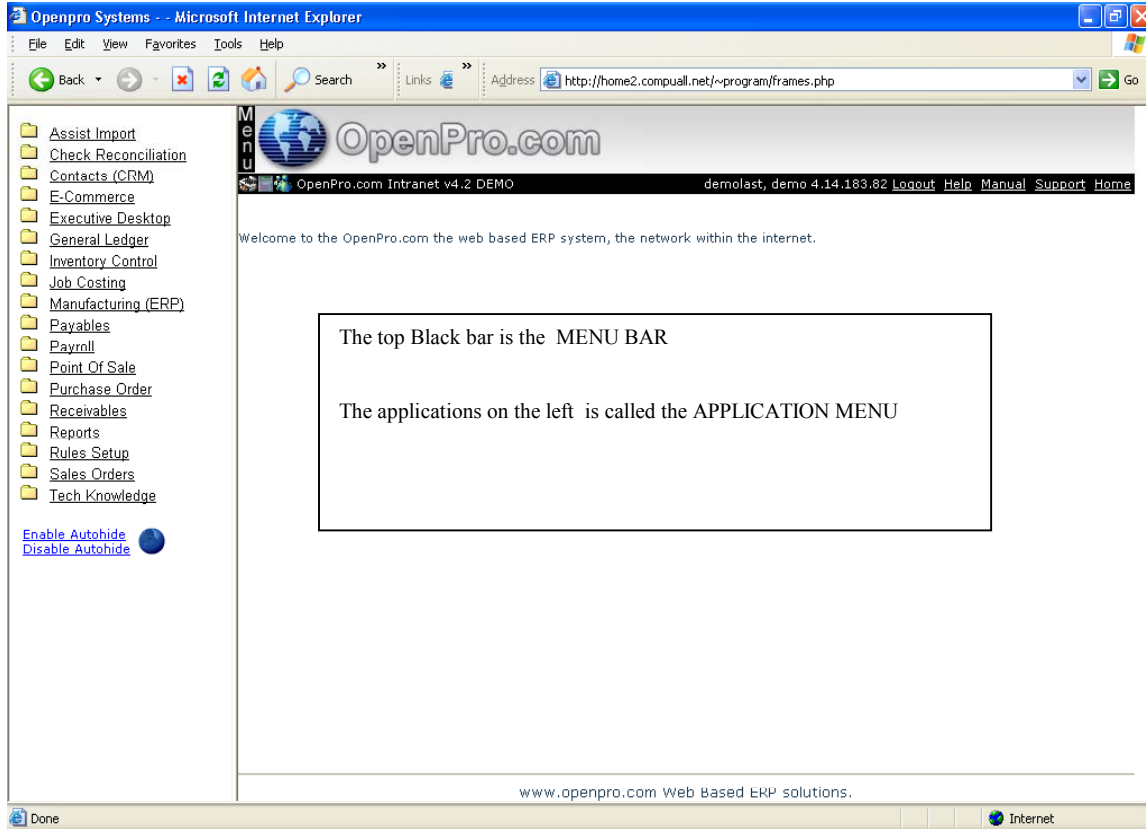


Figure 1.2: Main Application Desktop for the Windows Client

If you do not reach the application desktop, verify that you have entered your Username and password correctly. Also keep in mind that we have limited the number of concurrent sessions. Our server may be busy when you try to log in initially. Try again later and see if this corrects the problem. If you are still experiencing difficulty, visit the Frequently Asked Questions (FAQ) section of our website. Or contact Customer Service at opinfo@openpro.com.



On the top **menu bar**, to the far left of the screen, the following buttons are available:

Printer Icon: Prints information on the right hand screen to your printer. This is used to print reports, screens, as well you can right click your mouse and choose the print option.

Calculator: An on-line 10 key calculator.

Messenger Services: This option can be used to send instant messages to anyone who is logged into the system.

The menu bar also shows you what Version of the software you are running, who you are logged in as, and your IP address that you are logged in from. This information is also stored in the database for historical and security purposes.

To right of the top **menu bar** are the following.

Logout: brings you back to this login screen.

Help: Click to see detail help information about the screen you are working on.

Manual: Detailed manuals about each application, including policy and procedures.

Support: Online support during normal business hours, or can be emailed at supportop@openpro.com.

Home: Takes you back to the main menu screen.

On the **application menu** section at the bottom of the menu:

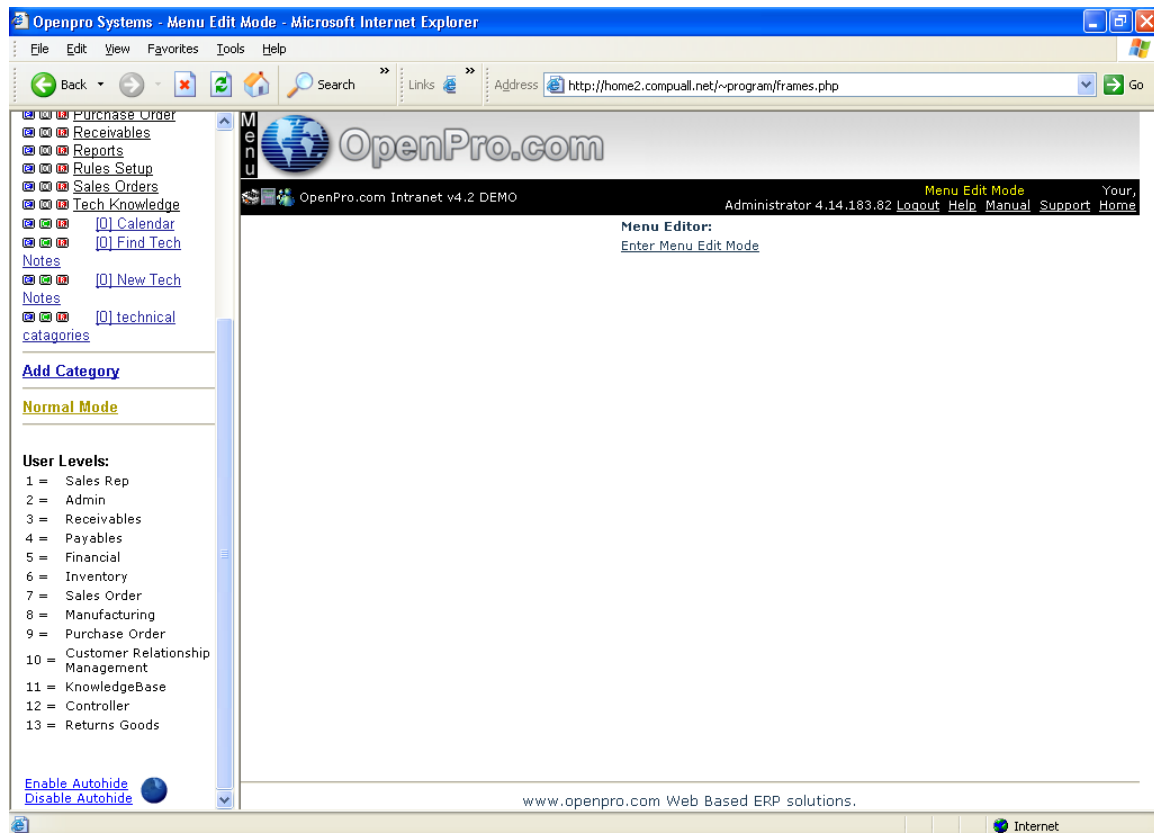
Enable Autohide. This will make the menu disappear until you move the mouse over to the far left of the screen then you will see the menu appear.

Disable Autohide.. This makes the menu fixed, always open and on top of the screen.

The Globe is used for instant the messaging between machines.

The Application menu is user definable, based upon your login id, you can have different items on this menu.

If you login as an administrator this gives you the capability to change the menu, names of the fields etc.



Exit the OpenPro Standard Solution

There are two ways to exit the OpenPro Standard Solution. You can click on the standard “X” icon in the upper righthand corner of the main application window. This will immediately close the application and return you to your computer desktop. Or you can use the System menu’s **LOGOUT** OpenPro option. To exit the application and return to your computer desktop using this method, select the “**LOGOUT** OpenPro” option from the System Module’s drop-down menu, as shown below:

Figure 1.5: Exit OpenPro

After selecting this option, the application will close, returning you to your computer desktop.

Application Fundamentals

The OpenPro Standard Solution contains a number of fundamental features designed to simplify your use of the software. In this section, we describe those fundamentals in an effort to familiarize you with their use. Let's look first at a sample Inventory Item screen, as shown below. We will use this Item Search screen to illustrate several of the application fundamentals to be found throughout the application—across multiple screens and modules.

Go to **Inventory Control\Item Find**

Openpro Systems - Item Find - Microsoft Internet Explorer

File Edit View Favorites Tools Help

Back Forward Stop Home Search Links Address http://home2.compuall.net/~program/frames.php Go

OpenPro.com

OpenPro.com Intranet v4.2 DEMO Item Find Your, Administrator 4.14.183.82 Logout Help Manual Support Home

Find Item [Add new Item HERE](#)

Search

Stock on hand exclude non-inventory items

By

Item Name Part # Vendor # Price Manufacturer # Weight UPC # Item Category

Show Inventory For Location

For item availability By Day By Week

Enable Autohide
Disable Autohide

www.openpro.com Web Based ERP solutions.


Internet

Search Screen

All the screens have many different options for searching records as well as sorting the data that is displayed on the screen. Also if you just hit the search button it will reply with all the records in the database. OpenPro ERP software has very powerful options with every search screen but also kept the logic simple for you.

In this example we can search items by the following categories:

Item #, Name or description, mfg number, weight and UPC. Data can also be searched by Item Category. If you have multiple warehouse locations you can narrow your search down by that single location. Each field can be searched using a **% for a wild card**. Example search **%FG%** to find all items that have FG in the item name. With our advance SQL database searches are fast and easy.



The screenshot shows a web browser window titled "Openpro Systems - Item Find - Microsoft Internet Explorer". The address bar shows "http://home2.compuall.net/~program/frames.php". The main content area displays the "OpenPro.com Intranet v4.2 DEMO" interface. A "Selected Items" table is visible, listing various items with columns for Item Name, Part #, Vendor #, Price, Manufacturer #, Weight, Stock, and UPC #. Each row includes "Edit" and "Inventory" links. A "New Search" link is located below the table. The left sidebar contains a menu with categories like In Process, Admin, Assist Import, Check Reconciliation, Contacts (CRM), E-Commerce, Executive Desktop, General Ledger, Inventory Control, IC Reports, Maintenance, Inventory History, Item Find, Item Find Inquiry, Item Serial No., Item Summary, Serial List, Transaction History, Job Costing, Manufacturing (ERP), Payables, Payroll, Point Of Sale, Purchase Order, Receivables, Reports, Rules Setup, Sales Orders, and Tech Knowledge.

<u>Item Name</u>	<u>Part #</u>	<u>Vendor #</u>	<u>Price</u>	<u>Manufacturer #</u>	<u>Weight</u>	<u>Stock</u>	<u>UPC #</u>	<u>ACTIONS</u>
1 Inch Nylon Strap	st100		4.99		0.000	165.000		Edit Inventory
FG100 OpenPro Red Wagon	FG100	V101	100.00	FG100	43.000	177.000	01238882231	Edit Inventory
FG200 Deluxe Wagon	FG200	OP	995.00	FV200	15.000	16072.000	45671233211	Edit Inventory
FG300 Custom Wagon	FG300	OP	1875.00	FG300	18.000	7.000	890812312313	Edit Inventory
FG400 Custom electric wagon	FG400	OP	15547.00	FG400	256.000	22.000	987987123123	Edit Inventory
FG500	FG500		50000.00		1000.000	100.000		Edit Inventory
METAL HANDLE	RM1200	METAL HANDLES	0.00	MH1200	4.000	456.000		Edit Inventory
RAW STEEL BARS	RMSTEEL	RS1000	0.00	SHEET STEEL	0.000	555.000	12312333	Edit Inventory
RAW WOOD 1 X 4	RM2001X4		0.00		0.000	220.000		Edit Inventory
SHEET METAL	RM1001		0.00	SM1001	0.000	55.000		Edit Inventory

Once you received the result listing you can **sort** the listing by clicking on the top header of each column that is underlined.

If you have a large result, you can refine your search by using **the EDIT/FIND** option on your browser.

You can **print** the information by clicking on the **Printer** Icon from the menu bar or by right clicking your mouse and choosing the print option anywhere on the screen.

If at any time you want to change your search you can click on new search or click Item Find on the left menu bar.

Application Fundamentals

On the right side of the listing are **actions**. This is where you can drill down into more details about this record (items).

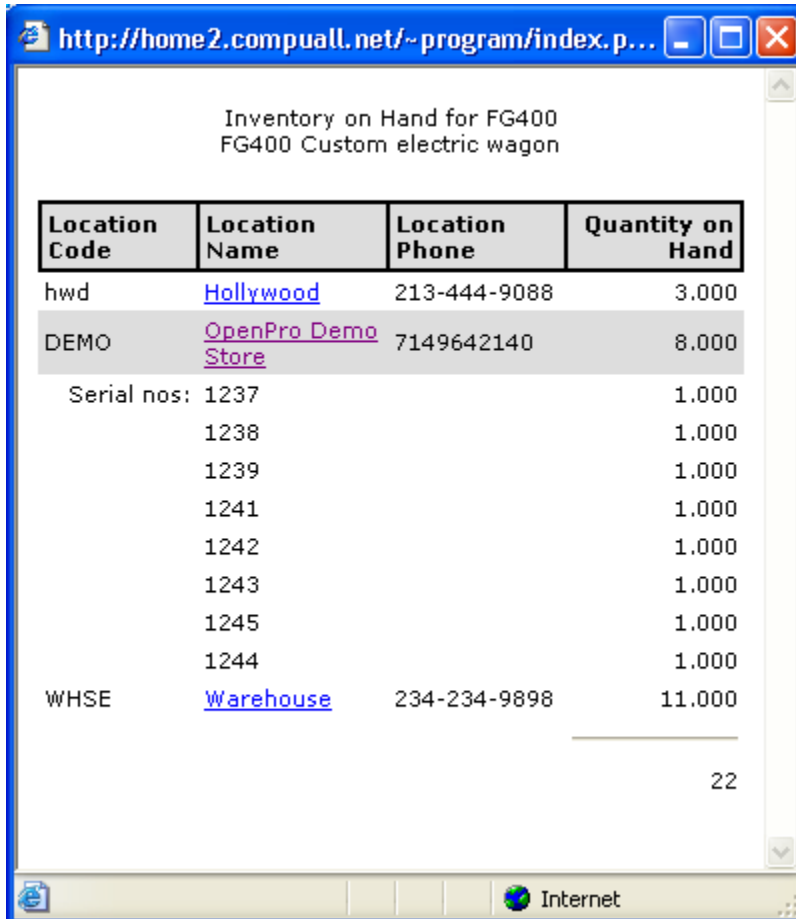
Here is the item availability screen that is used for **Available to Promise** for your customers.

Item Availability
FG100 - FG100 OpenPro Red Wagon Sum by Week

Date	Beginning Balance	Required	Receiving	Committed
6/22/2004	177.00	35.00	15.00	1.00
6/23/2004	156.00	0.00	0.00	7.00
6/24/2004	149.00	0.00	0.00	28.00
6/25/2004	121.00	0.00	0.00	0.00
6/26/2004	121.00	0.00	0.00	0.00
6/27/2004	121.00	0.00	0.00	0.00
6/28/2004	121.00	0.00	14.00	0.00
6/29/2004	135.00	0.00	0.00	0.00
6/30/2004	135.00	0.00	0.00	0.00
7/1/2004	135.00	0.00	0.00	10.00
7/2/2004	125.00	0.00	0.00	0.00
7/3/2004	125.00	0.00	0.00	0.00
7/4/2004	125.00	0.00	0.00	0.00
7/5/2004	125.00	0.00	0.00	0.00
7/6/2004	125.00	0.00	0.00	0.00
7/7/2004	125.00	0.00	143.00	0.00
7/8/2004	268.00	0.00	0.00	0.00
7/9/2004	268.00	0.00	0.00	10.00
7/10/2004	258.00	0.00	0.00	0.00
7/11/2004	258.00	0.00	0.00	0.00
7/12/2004	258.00	0.00	0.00	0.00
7/13/2004	258.00	0.00	0.00	0.00
7/14/2004	258.00	0.00	0.00	0.00
7/15/2004	258.00	0.00	0.00	0.00
7/16/2004	258.00	0.00	0.00	1.00
7/17/2004	257.00	0.00	0.00	0.00
7/18/2004	257.00	0.00	0.00	0.00
7/19/2004	257.00	0.00	0.00	2.00
7/20/2004	255.00	0.00	0.00	0.00

Application Fundamentals

Here is the **Show Inventory** screen, displaying the current stock on hand. Additionally you can see a drill down list of serialized items.



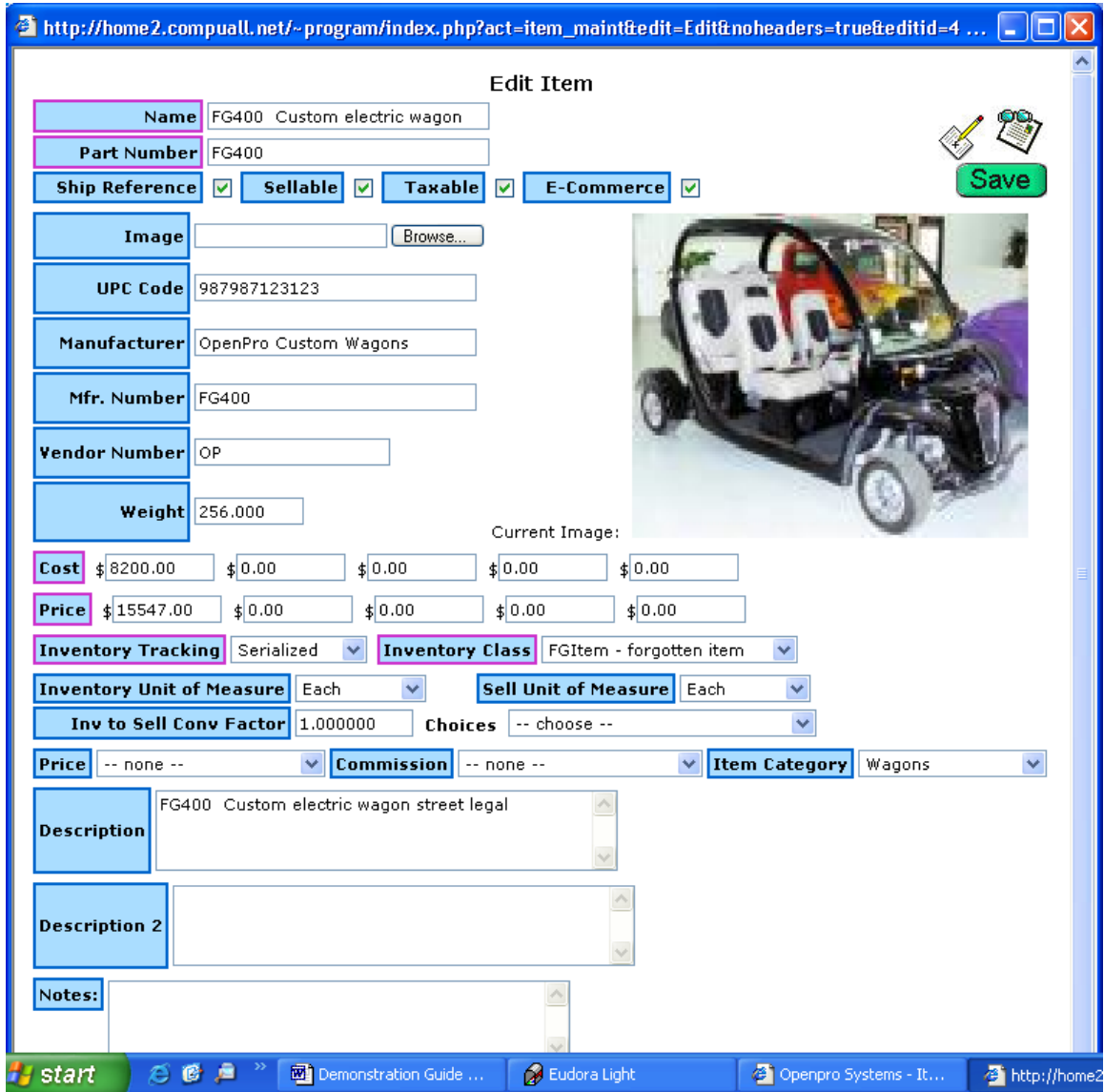
Inventory on Hand for FG400
FG400 Custom electric wagon

Location Code	Location Name	Location Phone	Quantity on Hand
hwd	Hollywood	213-444-9088	3.000
DEMO	OpenPro Demo Store	7149642140	8.000
	Serial nos:		
	1237		1.000
	1238		1.000
	1239		1.000
	1241		1.000
	1242		1.000
	1243		1.000
	1245		1.000
	1244		1.000
WHSE	Warehouse	234-234-9898	11.000

22

Application Fundamentals

Here is the **Edit** screen, displaying the item and all its characteristics.



Edit Item

Name FG400 Custom electric wagon

Part Number FG400

Ship Reference **Sellable** **Taxable** **E-Commerce** **Save**

Image


UPC Code 987987123123

Manufacturer OpenPro Custom Wagons

Mfr. Number FG400

Vendor Number OP

Weight 256.000

Current Image: 

Cost \$ 8200.00 \$ 0.00 \$ 0.00 \$ 0.00 \$ 0.00

Price \$ 15547.00 \$ 0.00 \$ 0.00 \$ 0.00 \$ 0.00

Inventory Tracking Serialized **Inventory Class** FGItem - forgotten item

Inventory Unit of Measure Each **Sell Unit of Measure** Each

Inv to Sell Conv Factor 1.000000 **Choices** -- choose --

Price -- none -- **Commission** -- none -- **Item Category** Wagons

Description FG400 Custom electric wagon street legal

Description 2

Notes:

Windows taskbar: start, Demonstration Guide ..., Eudora Light, Openpro Systems - It..., http://home2

Application Fundamentals

TAB Key

The TAB key on your keyboard may be used to move the cursor from one field to the next within any given data-entry screen. Simply place the cursor in the first field you want to enter data into—and when you're done entering data, hit the TAB key to move the cursor to the next field.

Also use the TAB key as a shortcut for converting date field entries to the proper format for your system. For example, in a "Start Date" field you might enter the numbers "022503". Then, with the cursor still blinking in the field, hit the TAB key. The date will be converted to "02/25/03"—or whatever the proper date format is for your system. Date formats are defined and maintained in the System Module.

CTRL Key

Three keyboard shortcuts are available whenever you place the cursor into an "Item Number" field. You saw the "Item Number" field in the Items example above. The "Item Number" field appears frequently throughout the application. Use the CTRL key—usually located on the bottom left-hand corner of your keyboard—in combination with either "S" to reach the three screens shown in the following examples:

Print (CTRL + P): Prints the contents of your screen.

Search (CTRL + S): Search for items using a variety of search criteria. This shortcut enables you to look up Items using partial values. In the above example, the User selected all available search options—the first line of the Item description, and/or the second line of the Item description.

ALT Key

If you depress the ALT key on your keyboard in combination with any of these underlined letters in your browser can be used for searching the results of the selection criteria For example, the following combination of keys will activate the FIND: ALT + E + F.

Common Application Buttons

Buttons occur frequently throughout the OpenPro ERP Solution. They are usually located to the far right side of the screen—and can be activated when you click your mouse once on them. The following descriptions define some of the more common application buttons used within the OpenPro Standard Solution:


X on top right: Closes the screen you are currently working on, without saving any information you may have entered. Returns you to the previous screen.

EDIT: Allows editing of information in a display.

SAVE: Saves any information you have entered to the OpenPro system.

Printing In OpenPro

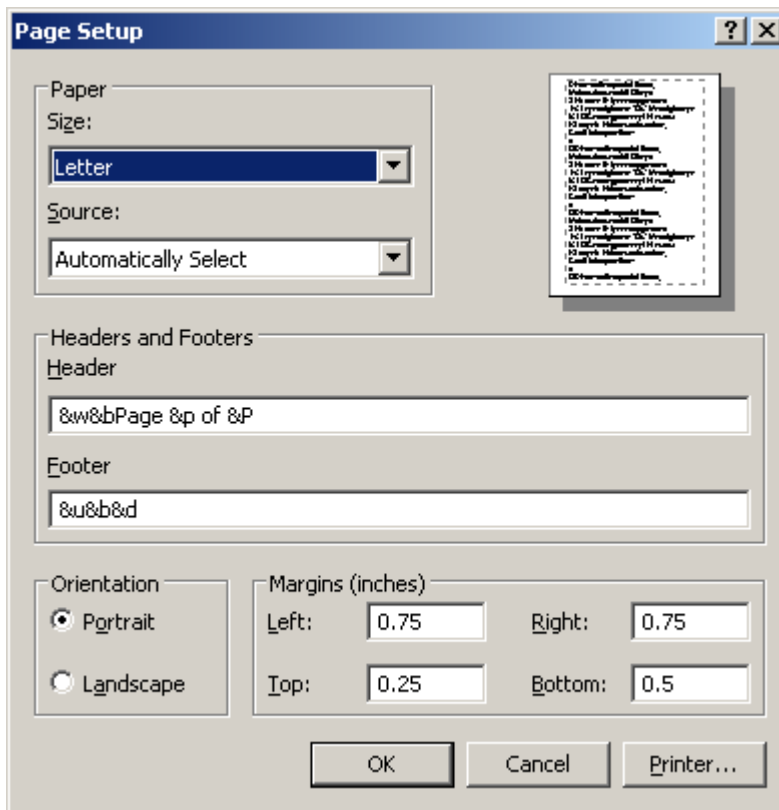
PRINT: Sends the contents of a screen or report to your default printer, providing you have assigned a default printer or a selection for any printer you want to print to and have a printer device available either via your client computer or networked server.

Also to print any screen using the browser, you can go to File, Print or right click on the screen and print. From the menu bar, you can click on the printer icon. 

Other setup features for printing to remove the header and footers during printing.

File, page setup.

And remove the Header and Footer defaults in the browser.



When printing custom forms like checks and invoices that have to print on preprinted forms, must use ½ margins for the forms to align correctly.



OpenPro ERP Software

Demo Fundamentals Guide

10061 Talbert Ave Suite 228

Fountain Valley, CA 92708

Telephone 714-378-4600

Fax 714-964-1491

www.openpro.com

infoop@openpro.com

OpenPro training demo fundamentals guide END